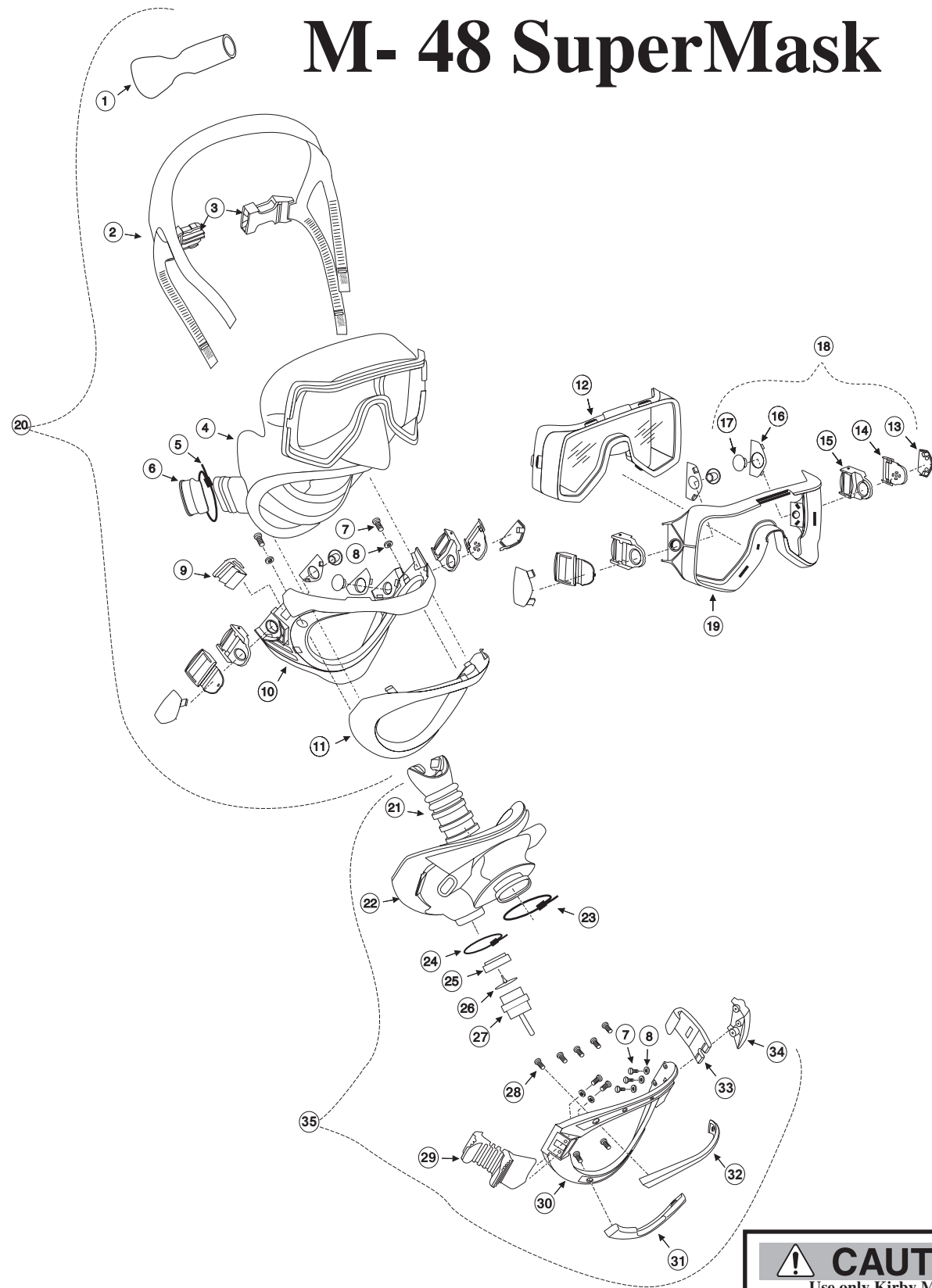


M- 48 SuperMask

*Note: Not all SuperMask parts are available for purchase.
 Parts available for purchase are indicated with an asterik **



LOC #	PART #	DESCRIPTION
1	810-001	Cushion
2	*805-031	Harness, semi-stretch (includes 1 & 3)
	*805-030	Harness, non-stretch (sold seperately) (includes 1 & 3)
3	805-020	Quick Release
4	810-005	Mask Skirt
5	*520-038	Tie Wrap
6	*820-155	Comm port plug
7	830-005	Screw
8	330-205	Washer
9	820-045	Pod Catch
10	820-035	Jaw Frame
11	820-040	Jaw Frame Retainer
12	865-005	Lens
13		Buckle Cap
14	<i>Order</i>	Buckle Catch/Release
15	<i>Complete</i>	Buckle Swivel
16	<i>Unit</i>	Buckle Cap Retainer
17	<i># 18</i>	Lock Plug
18	*805-005	Buckle Assembly
19	820-050	Lens Retainer
20	*805-010	Mask, without pod
21	*810-022L	Mouthpiece
22	810-100	Pod Cover, SCUBA
23	*520-039	Tie Wrap
24	*520-038	Tie Wrap
25	820-120	Water Dump Valve Body
26	*810-025	Water Dump Valve
27	*805-047	Tilt to Dump Body
28	830-008	Screw
29	*820-105	Pod Catch Release
30	820-100	Pod Frame
31	820-157	Pod Cover Retainer (bottom)
32	820-156	Pod Cover Retainer (top)
33	820-110	Hook
34	820-115	Hook Cover
35	*805-015	SCUBA Pod
	*800-048	Mask Complete (18 & 31) no regulator
	*800-050	Mask Complete (18 & 31) with regulator

Product Changes

Following publication of this booklet, certain changes in standard equipment, options, prices and the like may have occurred which would not be included in these pages. Your Authorized KMDSI dealer is your best source for up-to-date information on any of these products.

© Kirby Morgan Dive Systems, Inc. reserves the right to change product specifications at any time without incurring obligations.

CAUTION
 Use only Kirby Morgan original replacement parts. The use of other manufacturer's parts will interfere with the performance characteristics of your life support equipment and may jeopardize your safety. Additionally, any substitutions will void any warranties offered by KMDSI. When ordering spares, always insist on Kirby Morgan original parts.



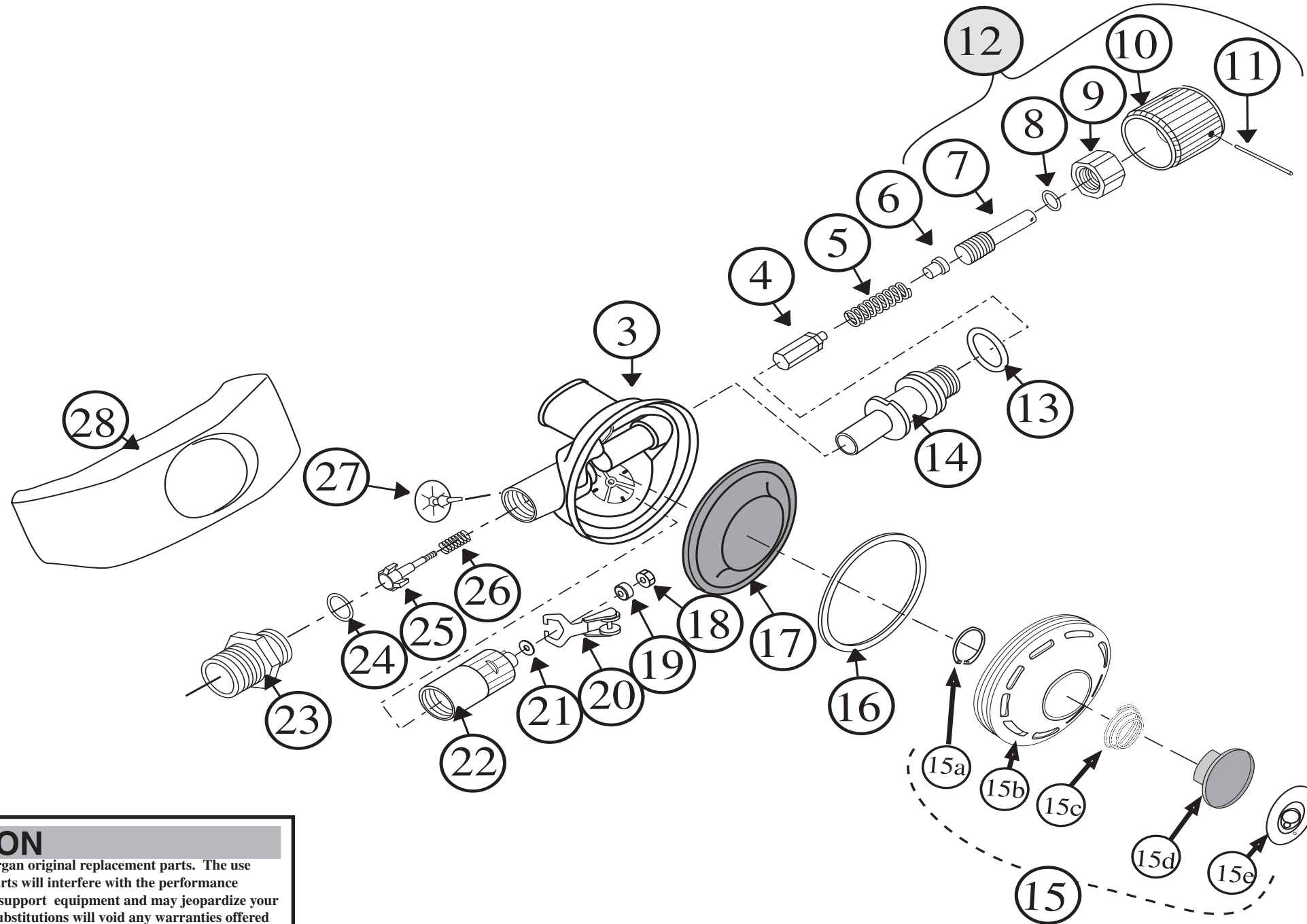
Kirby Morgan Dive Systems, Inc.® 1430 Jason Way, Santa Maria, CA 93455

Phone: 805/928-7772 Fax: 805/928-0342

www.KirbyMorgan.com e-mail: kmdsi@KirbyMorgan.com

805-120 Regulator

Part#	Description
1	Left empty intensionally
2	Left empty intensionally
3	320-006 Regulator Body Assem.
4	550-098 Piston
5	535-910 Spring, Adjustment
6	350-210 Spacer
7	350-045 Adjustment Shaft
8	510-011 O-Ring
9	350-025 Packing Nut
10	320-035 Adjustment Knob
11	530-601 Roll Pin
12	305-015 Adj. Knob Assem.
13	510-016 O-Ring
14	350-205 Adjustment Tube
15	305-180 Cover Assem.
15a	535-905 Retaining Clip
15b	350-075 Cover
15c	535-810 Spring, Purge Button
15d	520-017 Purge Button
15e	520-077 Purge Button Sticker
16	320-030 Washer
17	510-553 Diaphragm
18	530-303 Lock Nut
19	550-052 Spacer
20	545-038 Lever Arm Assem.
21	530-506 Washer
22	350-200 Inlet Tube
23	350-003 Inlet Nipple
24	510-016 O-Ring
25	545-026 Inlet Valve
26	535-915 Main Spring
27	510-552 Exhaust Valve
28	310-200 SuperFlow Exhaust T"
28*	310-279 Old Style Exhaust T"



⚠ CAUTION

Use only Kirby Morgan original replacement parts. The use of other manufacturer's parts will interfere with the performance characteristics of your life support equipment and may jeopardize your safety. Additionally, any substitutions will void any warranties offered by KMDSI. When ordering spares, always insist on Kirby Morgan original parts.



Kirby Morgan Dive Systems, Inc.® 1430 Jason Way, Santa Maria, CA 93455

Phone: 805/928-7772 Fax: 805/928-0342

www.KirbyMorgan.com e-mail: kmdsi@KirbyMorgan.com